

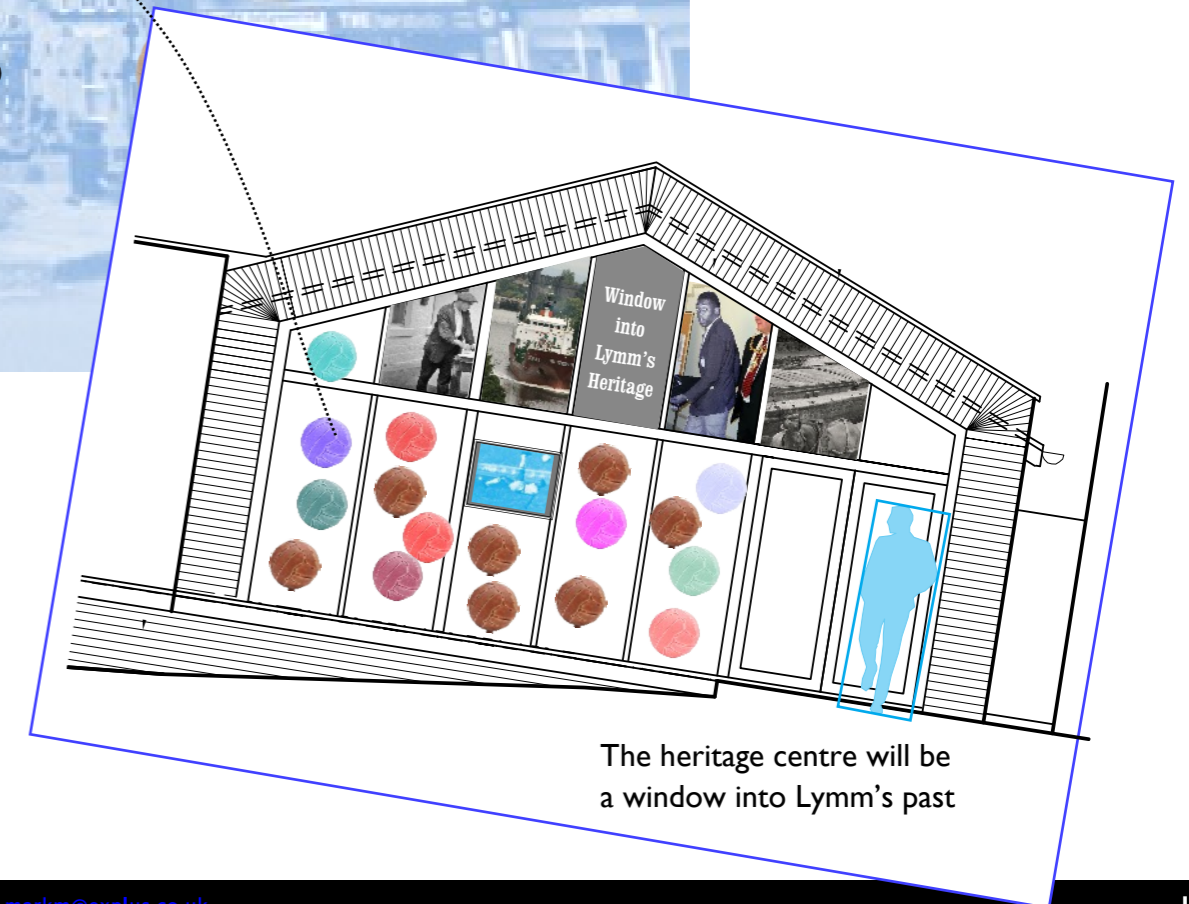


At present there is no central place you can interact with material that orientates to the past of Lymm on the ground. There is also no well orchestrated way you can explore the heritage of Lymm and then allows you to explore the village.

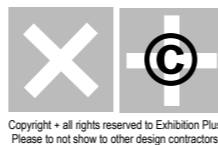
The new heritage centre will be a 24/7 experience to answer this need plus a lot more....

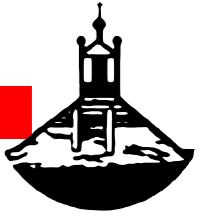


With the aid of Pele and many more Lymm characters we will (bicycle) kick local heritage into touch



The heritage centre will be a window into Lymm's past





The Lymm Story - a Chronological approach

Prehistory	Sandstone, "Dinosuars" footprints
1075 ish	Domesday Book
1075-1700	Lords of the Manor, Agricultural,
Toward end of this prd	Lymm Cross- Village emblem – focal point for events anniversaries etc
1700	Slitting Mill – first industry (visitable remains very close by)
1767 onwards	The accidental (Lymm just happened to be in the way) Bridgewater canal that changed everything. Trade with Manchester Warrington, Growth of Fustian Cutting - total change in character of village
1853	The Railway -all change again – The arrival of the "middling sort" as we called the middle classes.
1861	Last Bastion of the Gentry and the "Lord of the Manor" – The Dewhursts – and the story of the tenants pulling the carriage.
1850-1900	Lymm's Traditions .. Rushbearing, May Queen – a
1894	Manchester Ship Canal – Suddenly Lymm is on the coast !
1890 – 1960ish	The people's republic of Lymm (just kidding.) Urban district council formed – grand offices, own waterworks (act of parliament) own gas works – self sufficient community – Growing confidence - Retail growth
Around this period	Growth of Tourism – they came along both canals, by bicycle, by charabanc and lastly by car
Early 20 th Century	The last burst of new industry – The Salt works (Lord Lever) and what might have been Gold Beating
Two World Wars	The price paid by Lymm
1962	The arrival of the motorway, mass car ownership the gradual change to a "suburb" with a village at its heart.
1966	Lymm's world moment of fame – Brazil, Pele
Lymm Today	Festivals , Events holding onto to the old but creating new too Transport Day, Dickensian,
Lymm Tomorrow	Blank Screen for visitors to complete



What is the heritage that the project will focus on ?

The transport, industrial and social history of Lymm and surrounding areas – more specifically – Possibly presented under the banner Trades, Transport, Tradition

Transport

The Bridgewater Canal – the earliest purpose built commercial canal flows through the centre of the village and was the catalyst for change in the village in particular for the rapid growth of the fustian cutting trade, of which there are still recognisable remains today i.e. early three storey fustian cutting workshops.

The Manchester Ship Canal also passes through the parish and was briefly used for pleasure steamers as well as commercial traffic with the building of a passenger jetty in 1895 at Statham. Lymm also had a turnpike road of which there is still evidence, a railway – which has since been converted as part of the Trans-Pennine Trail. Thelwall Viaduct, the largest motorway bridge in the UK of its time (1962) is also in Lymm.

Lymm is today home to a highly successful annual "Historic Transport Day" which attracts 7,000+ visitors.

Industrial

The fustian cutting industry, mentioned above once employed 50% of the working population of the village. It typified the shift from agricultural to industrial employment with the radical changes to working conditions that that implied.

Lymm was also an important centre of the gold beating industry and supplied the gold leaf for many important buildings including Buckingham Palace gates. Wrights of Lymm is still in business in the village.

Lymm was at one time the site of an important salt works .

There are the remains of a pre industrial revolution slitting mill in Slitten gorge. Other industries, now disappeared, include quarrying and basket making.

Social History

There is a fascinating story to tell of the social changes wrought by the development of transport and industry; the gradual replacement of the "gentry" who occupied large estates– such as Lymm Hall– with a new "professional middle class". At the other end of the scale there was a huge shift from an agricultural base to new industries like fustian cutting that brought poor working and living conditions.

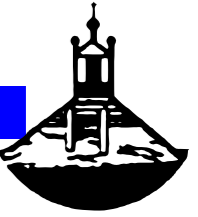
Lymm has a long tradition as a tourist destination for nearby industrial towns dating back 200 years with all evolving types of transport serving these visitors. They were drawn to the village by sights such as Lymm Cross (Grade I listed) and the scenic beauty of Lymm Dam as well as the many pubs.

Lymm is also possibly the only Cheshire village to retain both its annual May Queen and Rushbearing traditions – both dating back to the nineteenth century.

Temporary Exhibitions

There are other themes to be explored, possibly as temporary exhibitions e.g. Lymm's geology including the Triassic Labyrinthodont footprint which is held in the village and Lymm's architectural History including the Grade I Listed Lymm Cross, Lymm Hall (of Elizabethan origin) and the Grade 2 listed Heatley Canal Warehouse – the only one of its type surviving on the Bridgewater Canal. CC

Using the Pele kick to kickstart the activities?



A possible drone film that could advertise the offer and act as a lever to involve the community.

Pele starting off with his bicycle kick (slow mo as this BUT no Germans!)
<https://youtu.be/erQdTUdeABl>

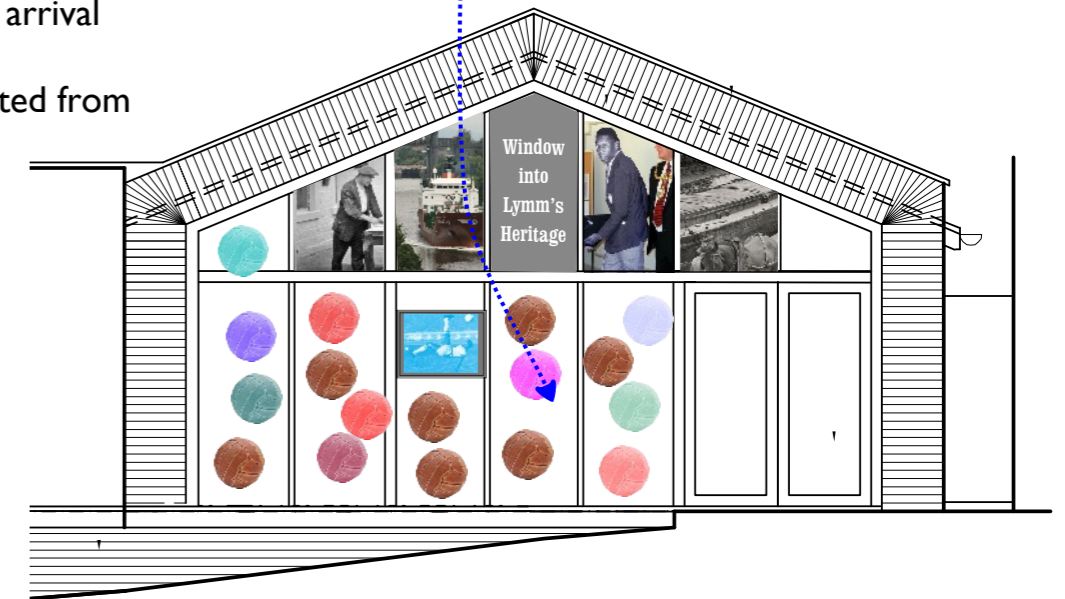
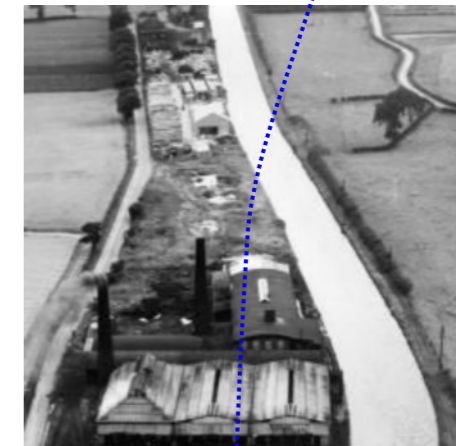
And the short promo follows the flight of the ball (past images of Lymm) that will eventually land in your new heritage centre.

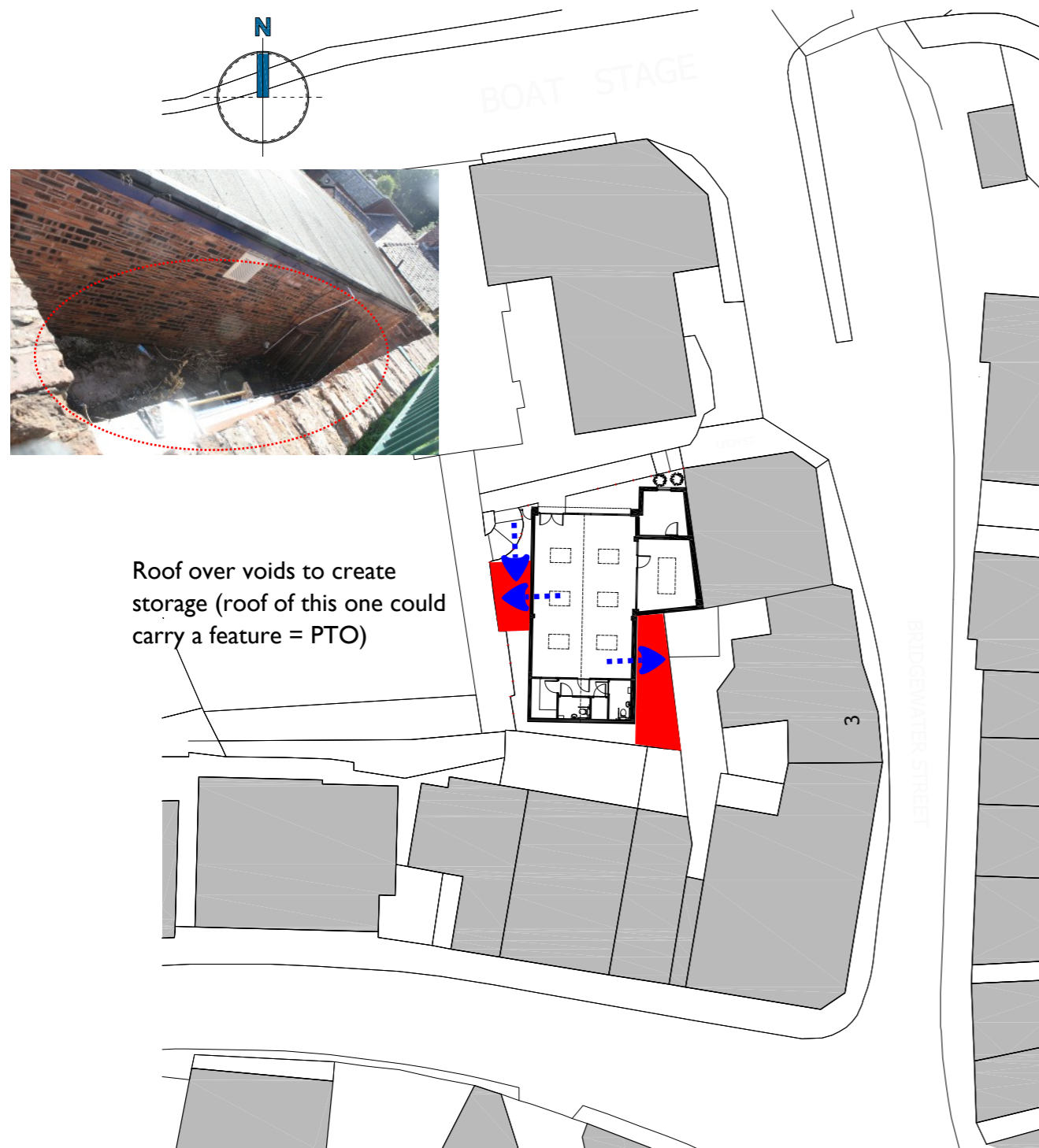
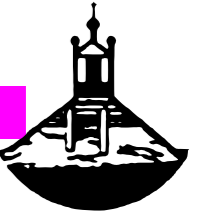
As the ball flies thru the air (unique air shots of Lymm) local people standing in front of their house/ favourite building / feature in landscape/thing - all kick a Lymm football.

This ball (present Lymm) also flies to the new Heritage centre showing unique Lymm shots from the air.

Both balls land in Heritage Centre with local people looking up and waving their arrival

The window display in the new Heritage Centre could be full of footballs (collected from the village with large notes on each)....



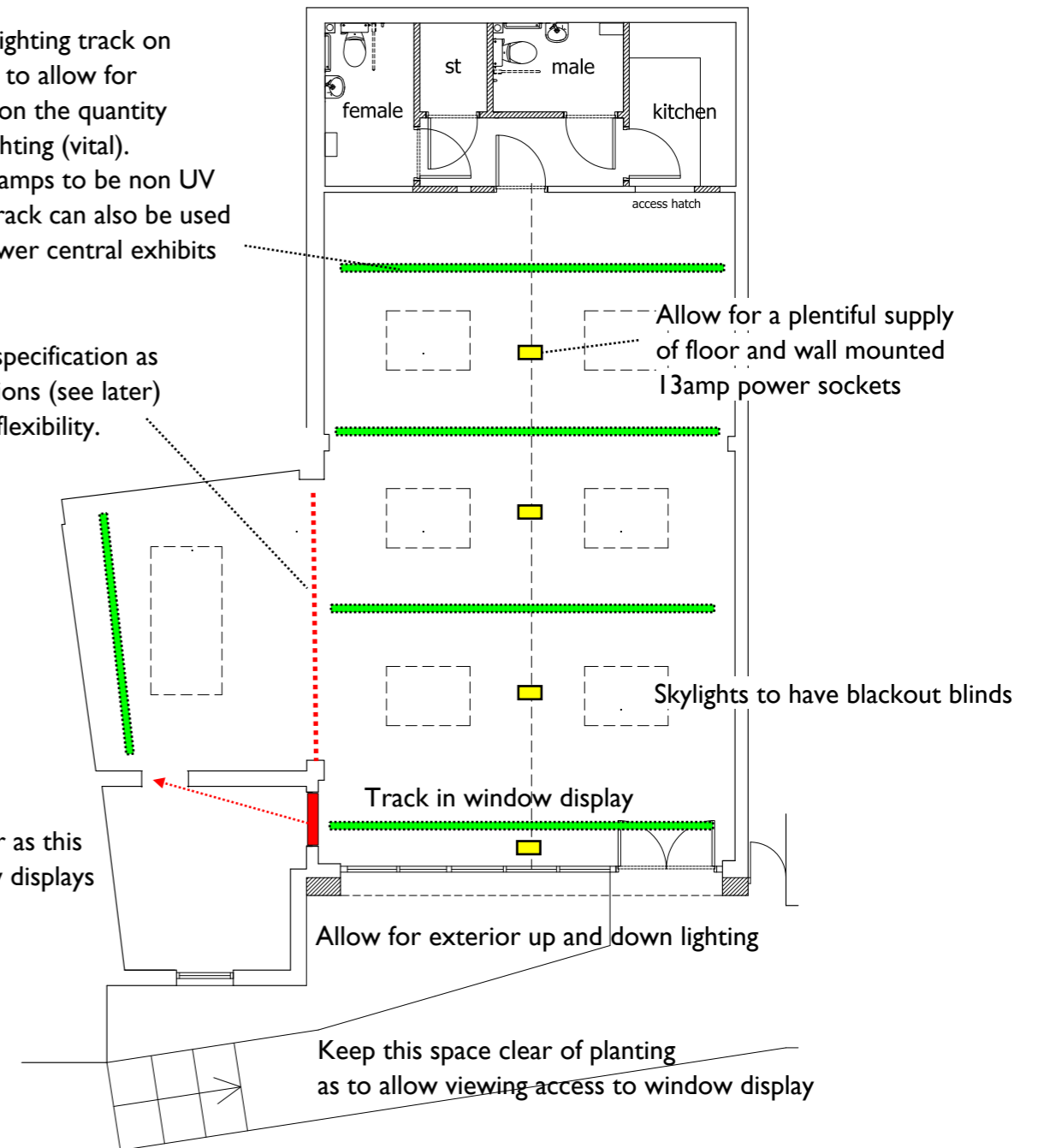


Consider encroaching on the lost exterior spaces for vital storage.
 Note to developer - will always be useful for any tenant.

Allow for LED spotlighting track on a number of circuits to allow for maximum flexibility on the quantity and quality of the lighting (vital). All spots and flood lamps to be non UV type and dimable. Track can also be used to feed power to lower central exhibits

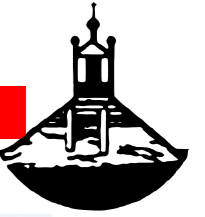
Leave glass screen of specification as movable display partitions (see later) could allow for more flexibility.

Consider moving door as this space vital for window displays - see later

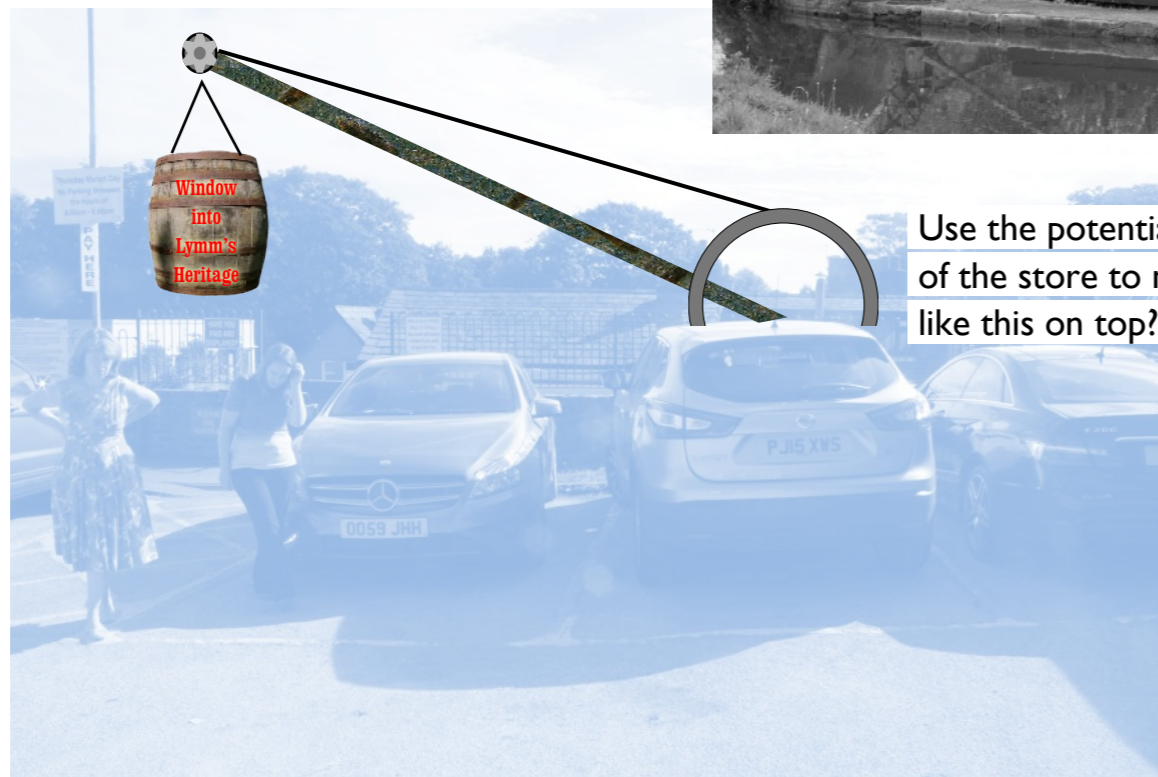


Consideration for the space to be fitted out for display etc

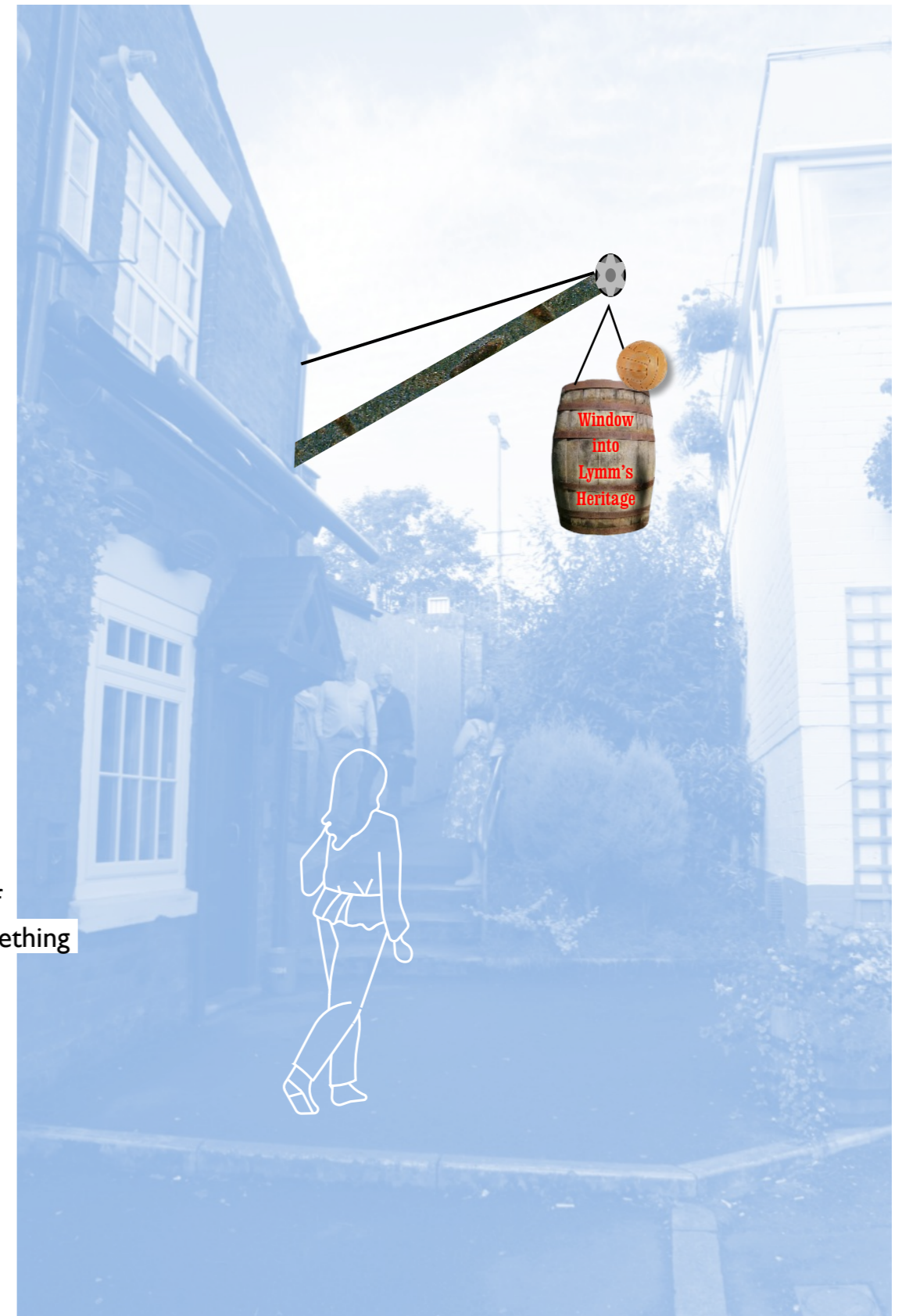
Finding the new Heritage Centre



At present the site is offset from the street vista and hidden below the car park



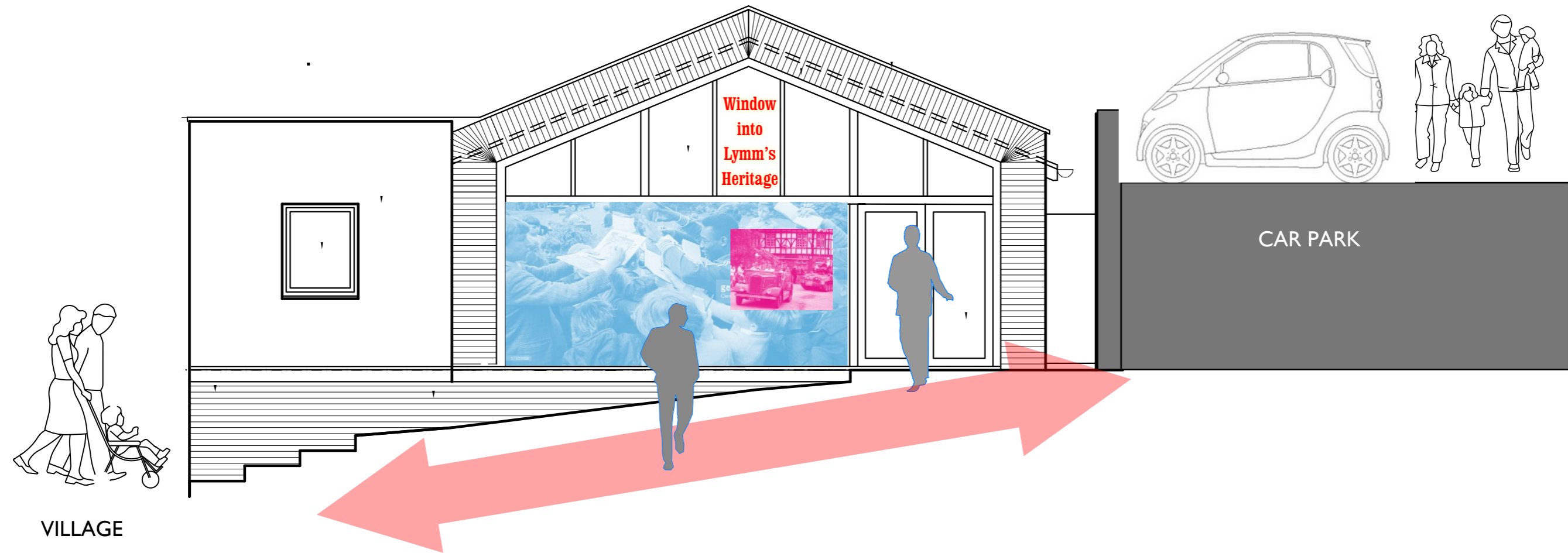
Use the potential new roof of the store to mount something like this on top?



Create mechanisms to make the Heritage Centre easy to find



The new Heritage Centre is on a well trodden route between the car park and the village



We intend to utilise this small space to the maximum mounting core material, temporary exhibitions and events, workshops for a wide target audience including schools.

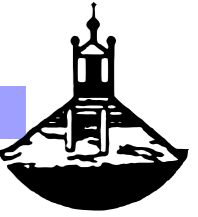
We will be exploiting the glass frontage to create a shop window that will enable Lymm's heritage to be open at all hours.



On the centre site stood a fustion cutting house - we will celebrate this!



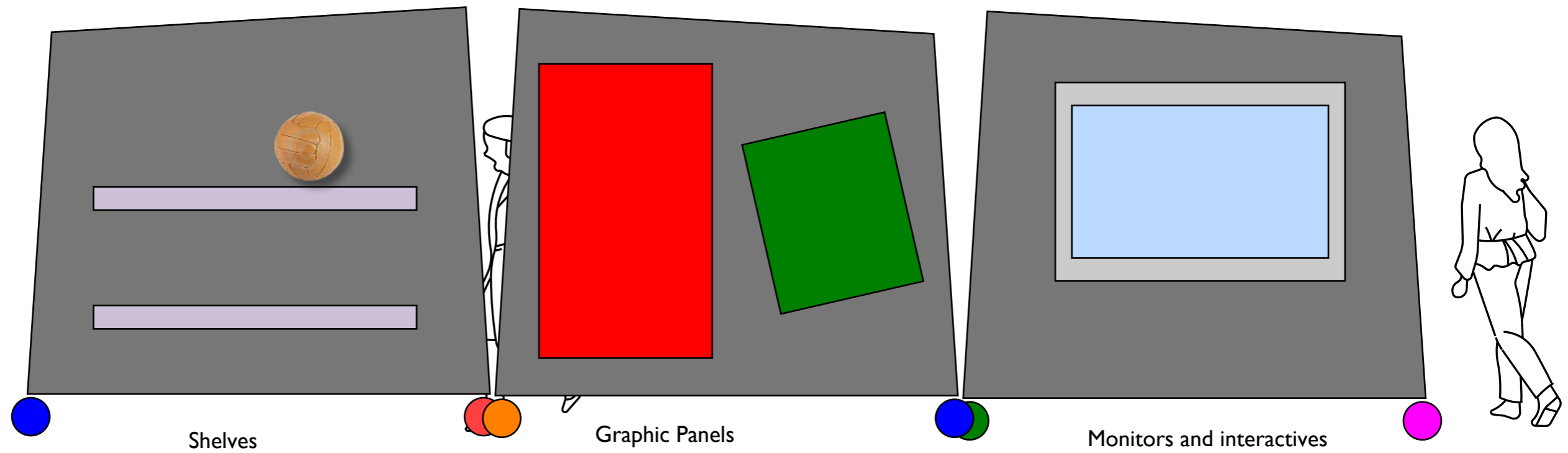
Model of conversion



Window interactive media = centre open all hours



Display walls on wheels



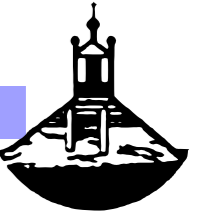
Create a series of modular display boxes on lockable castors that can be HIGHLY flexible and support a number of activities



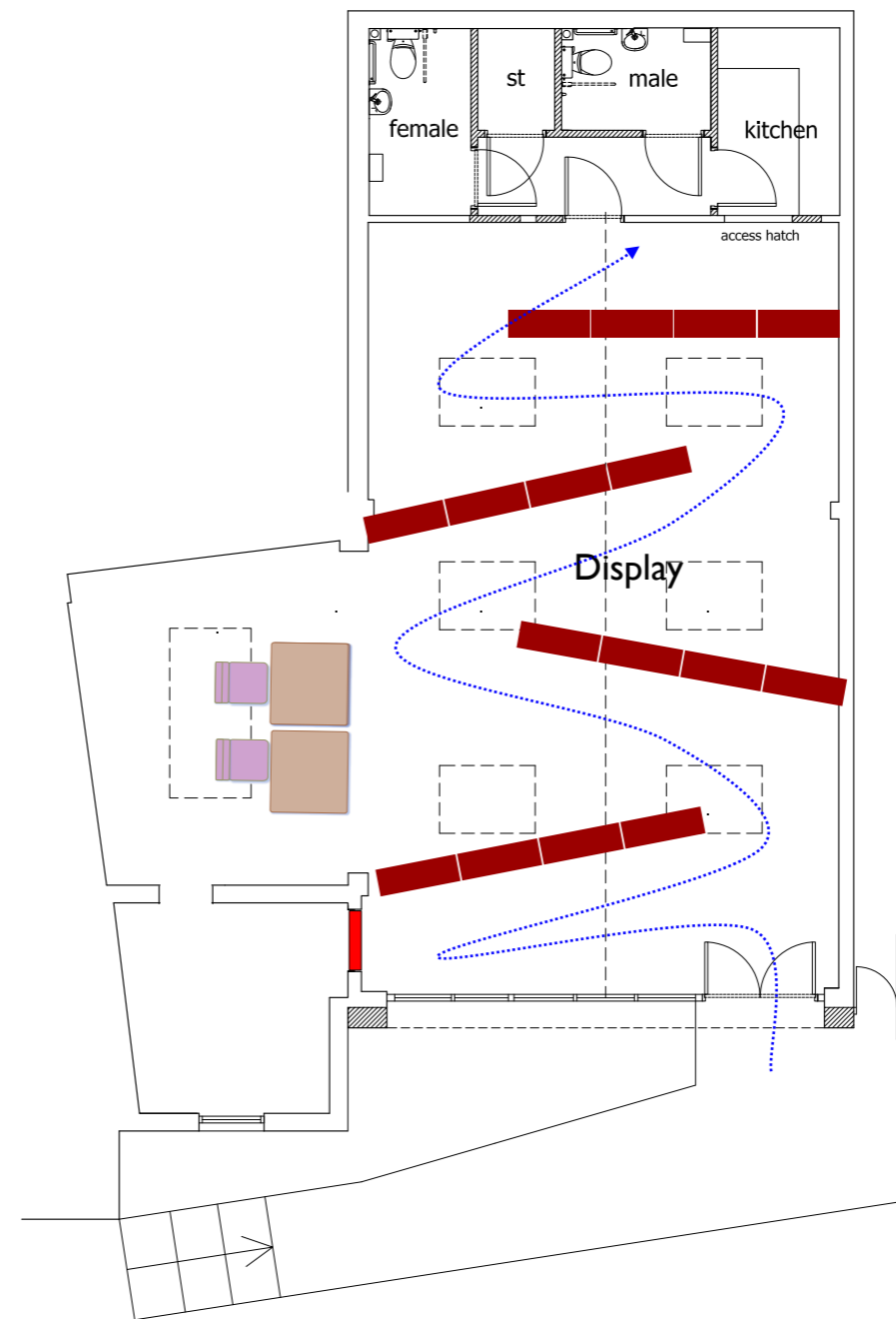
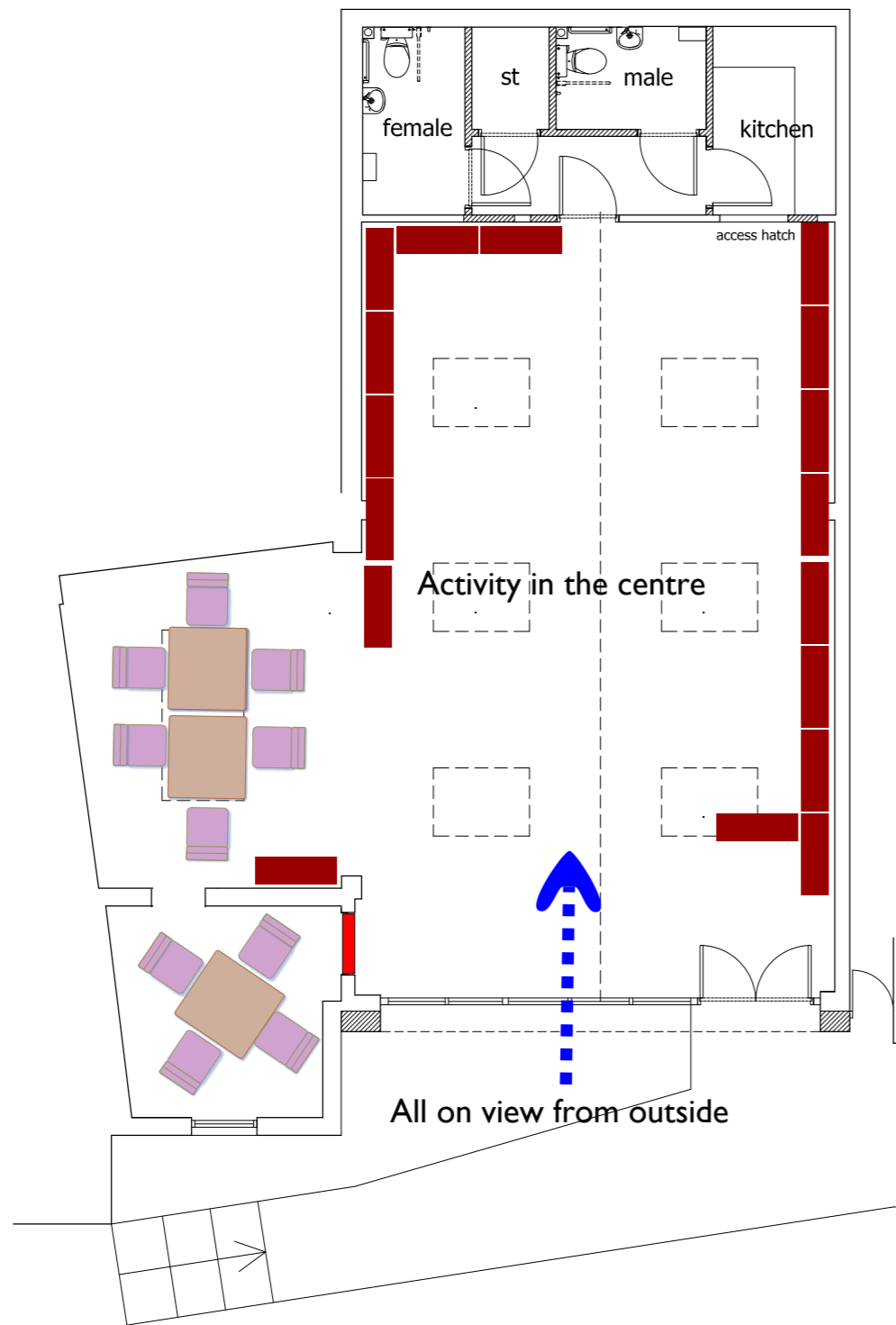
The heritage centre will become a highly adjustable stage set that at times will be partially obscured from the street to host a number of workshops, lectures and films etc

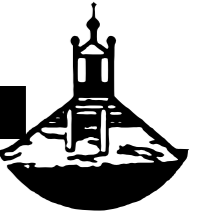
The Heritage Centre more inward looking





The Heritage Centre can be open all hours and fully visible from the outside





Your space of 70 sq/m with a budget of £55k + vat works out at £785 sq m PLUS vat

1. Structure and Display boxes 16 off 1200mm x 500mm wide 2100mm ht @ £250 each = **£4000 + Vat**
 2. Monitor and projection hardware (industrial not domestic) **£5000 + Vat**
 3. Software for programmes allow **£6000 + Vat**
 4. Graphic panel production allow **£4000 + Vat**
 5. Interactives and engineering allow **£5000 + Vat**
 6. One display case allow **£2500 + Vat**
 7. Props and models allow **£4000 + Vat**
 8. App development allow **£5000 + Vat**
 9. Brochure and pamphlet production allow **£1500 + Vat**
 10. Display extra lighting allow **£1000 + Vat**
 11. Agency and scanning cost allow **£1000 + Vat**
 12. Delivery allow **£500 + Vat**
 13. Installation allow **£2,000 + Vat**
 13. Artwork Production fees allow **£2000+ Vat**
- SUB TOTAL **£43,500+ Vat**
- Design Fees @ 15% **£6525.00 + Vat**
- Contingency @ 10% **£5000+ Vat**
- TOTAL £55,025.00 + Vat**